

# Camlocks

## PART A



### Aluminum Part A

Part No.	Size
AL-A050	1/2"
AL-A075	3/4
AL-A100	1
AL-A125	1 1/4
AL-A150	1 1/2
AL-A200	2
AL-A250	2 1/2
AL-A300	3
AL-A400	4
AL-A500	5
AL-A600	6
AL-A800	8

### Brass Part A

Part No.	Size
BR-A050	1/2"
BR-A075	3/4
BR-A100	1
BR-A125	1 1/4
BR-A150	1 1/2
BR-A200	2
BR-A250	2 1/2
BR-A300	3
BR-A400	4

### Stainless Part A

Part No.	Size
SS-A050	1/2"
SS-A075	3/4
SS-A100	1
SS-A125	1 1/4
SS-A150	1 1/2
SS-A200	2
SS-A250	2 1/2
SS-A300	3
SS-A400	4
SS-A500	5
SS-A600	6

[www.irhose.com](http://www.irhose.com)

## PART B



### Aluminum Part B

Part No.	Size
AL-B050	1/2"
AL-B075	3/4
AL-B100	1
AL-B125	1 1/4
AL-B150	1 1/2
AL-B200	2
AL-B250	2 1/2
AL-B300	3
AL-B400	4
AL-B500	5
AL-B600	6
AL-B800	8

### Brass Part B

Part No.	Size
BR-B050	1/2"
BR-B075	3/4
BR-B100	1
BR-B125	1 1/4
BR-B150	1 1/2
BR-B200	2
BR-B250	2 1/2
BR-B300	3
BR-B400	4

### Stainless Part B

Part No.	Size
SS-B050	1/2"
SS-B075	3/4
SS-B100	1
SS-B125	1 1/4
SS-B150	1 1/2
SS-B200	2
SS-B250	2 1/2
SS-B300	3
SS-B400	4
SS-B500	5
SS-B600	6

# Camlocks

## PART C



### Aluminum Part C

Part No.	Size
AL-C050	1/2"
AL-C075	3/4
AL-C100	1
AL-C125	1 1/4
AL-C150	1 1/2
AL-C200	2
AL-C250	2 1/2
AL-C300	3
AL-C400	4
AL-C500	5
AL-C600	6
AL-C800	8

### Brass Part C

Part No.	Size
BR-C050	1/2"
BR-C075	3/4
BR-C100	1
BR-C125	1 1/4
BR-C150	1 1/2
BR-C200	2
BR-C250	2 1/2
BR-C300	3
BR-C400	4

### Stainless Part C

Part No.	Size
SS-C050	1/2"
SS-C075	3/4
SS-C100	1
SS-C125	1 1/4
SS-C150	1 1/2
SS-C200	2
SS-C250	2 1/2
SS-C300	3
SS-C400	4
SS-C500	5
SS-C600	6

[www.irhose.com](http://www.irhose.com)

## PART D



### Aluminum Part D

Part No.	Size
AL-D050	1/2"
AL-D075	3/4
AL-D100	1
AL-D125	1 1/4
AL-D150	1 1/2
AL-D200	2
AL-D250	2 1/2
AL-D300	3
AL-D400	4
AL-D500	5
AL-D600	6
AL-D800	8

### Brass Part D

Part No.	Size
BR-D050	1/2"
BR-D075	3/4
BR-D100	1
BR-D125	1 1/4
BR-D150	1 1/2
BR-D200	2
BR-D250	2 1/2
BR-D300	3
BR-D400	4

### Stainless Part D

Part No.	Size
SS-D050	1/2"
SS-D075	3/4
SS-D100	1
SS-D125	1 1/4
SS-D150	1 1/2
SS-D200	2
SS-D250	2 1/2
SS-D300	3
SS-D400	4
SS-D500	5
SS-D600	6

# Camlocks

## PART E



Aluminum Part E

Part No.	Size
AL-E050	1/2"
AL-E075	3/4"
AL-E100	1"
AL-E125	1 1/4"
AL-E150	1 1/2"
AL-E200	2"
AL-E250	2 1/2"
AL-E300	3"
AL-E400	4"
AL-E500	5"
AL-E600	6"
AL-E800	8"

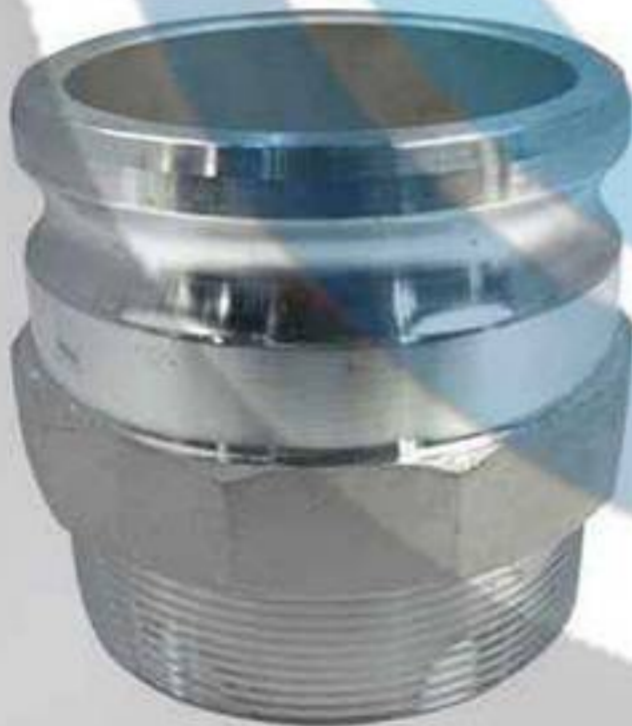
Brass Part E

Part No.	Size
BR-E050	1/2"
BR-E075	3/4"
BR-E100	1"
BR-E125	1 1/4"
BR-E150	1 1/2"
BR-E200	2"
BR-E250	2 1/2"
BR-E300	3"
BR-E400	4"

Stainless Part E

Part No.	Size
SS-E050	1/2"
SS-E075	3/4"
SS-E100	1"
SS-E125	1 1/4"
SS-E150	1 1/2"
SS-E200	2"
SS-E250	2 1/2"
SS-E300	3"
SS-E400	4"
SS-E500	5"
SS-E600	6"

## PART F



Aluminum Part F

Part No.	Size
AL-F050	1/2"
AL-F075	3/4"
AL-F100	1"
AL-F125	1 1/4"
AL-F150	1 1/2"
AL-F200	2"
AL-F250	2 1/2"
AL-F300	3"
AL-F400	4"
AL-F500	5"
AL-F600	6"
AL-F800	8"

Brass Part F

Part No.	Size
BR-F050	1/2"
BR-F075	3/4"
BR-F100	1"
BR-F125	1 1/4"
BR-F150	1 1/2"
BR-F200	2"
BR-F250	2 1/2"
BR-F300	3"
BR-F400	4"

Stainless Part F

Part No.	Size
SS-F050	1/2"
SS-F075	3/4"
SS-F100	1"
SS-F125	1 1/4"
SS-F150	1 1/2"
SS-F200	2"
SS-F250	2 1/2"
SS-F300	3"
SS-F400	4"
SS-F500	5"
SS-F600	6"

# Camlocks

## PART DP (DUST PLUG)



Aluminum Part DP

Part No.	Size
AL-DP050	1/2"
AL-DP075	3/4"
AL-DP100	1"
AL-DP125	1 1/4"
AL-DP150	1 1/2"
AL-DP200	2"
AL-DP250	2 1/2"
AL-DP300	3"
AL-DP400	4"
AL-DP500	5"
AL-DP600	6"

Brass Part DP

Part No.	Size
BR-DP050	1/2"
BR-DP075	3/4"
BR-DP100	1"
BR-DP125	1 1/4"
BR-DP150	1 1/2"
BR-DP200	2"
BR-DP250	2 1/2"
BR-DP300	3"
BR-DP400	4"

Stainless Part DP

Part No.	Size
SS-DP050	1/2"
SS-DP075	3/4"
SS-DP100	1"
SS-DP125	1 1/4"
SS-DP150	1 1/2"
SS-DP200	2"
SS-DP250	2 1/2"
SS-DP300	3"
SS-DP400	4"
SS-DP500	5"
SS-DP600	6"

## PART DC (DUST CAP)



Aluminum Part DC

Part No.	Size
AL-DC050	1/2"
AL-DC075	3/4"
AL-DC100	1"
AL-DC125	1 1/4"
AL-DC150	1 1/2"
AL-DC200	2"
AL-DC250	2 1/2"
AL-DC300	3"
AL-DC400	4"
AL-DC500	5"
AL-DC600	6"

Brass Part DC

Part No.	Size
BR-DC050	1/2"
BR-DC075	3/4"
BR-DC100	1"
BR-DC125	1 1/4"
BR-DC150	1 1/2"
BR-DC200	2"
BR-DC250	2 1/2"
BR-DC300	3"
BR-DC400	4"

Stainless Part DC

Part No.	Size
SS-DC050	1/2"
SS-DC075	3/4"
SS-DC100	1"
SS-DC125	1 1/4"
SS-DC150	1 1/2"
SS-DC200	2"
SS-DC250	2 1/2"
SS-DC300	3"
SS-DC400	4"
SS-DC500	5"
SS-DC600	6"

# Camlocks

## COUPLER ADAPTER



### Aluminum Reducer

Part No.	Size
AL-DA2015	2" x 1½"
AL-DA3020	3 x 2
AL-DA3040	3 x 4
AL-DA4020	4 x 2
AL-DA4030	4 x 3
AL-DA6030	6 x 3
AL-DA6040	6 x 4

### Stainless Reducer

Part No.	Size
SS-DA3020	3" x 2"
SS-DA4020	4 x 2
SS-DA4030	4 x 3

## DOUBLE SPOOL ADAPTER



### Aluminum Reducer

Part No.	Size
AL-AA3020	3" x 2"
AL-AA4020	4 x 2
AL-AA4030	4 x 3
AL-AA6040	6 x 4

### Stainless Reducer

Part No.	Size
SS-AA3020	3" x 2"
SS-AA4030	4 x 3

## HANDLE, RING & PIN



### Brass Handle, Ring & Pin

Part No.	Size
BR-HRP075	½" - ¾"
BR-HRP100	1
BR-HRP200	1¼ - 2½
BR-HRP300	3 - 4
BR-HRP600	6

### Stainless Handle, Ring & Pin

Part No.	Size
SS-HRP075	½" - ¾"
SS-HRP100	1
SS-HRP200	1¼ - 2½
SS-HRP300	3 - 4
SS-HRP600	6

# Camlocks

## CAMLOCK GASKETS



	BUNA N	NEOPRENE	TEFLON BUNA FILLER	VITON
TEMP.	-40°F to 180°F	-40°F to 190°F	-40°F to 180°F	-20°F to 400°F
Size	Part No.	Part No.	Part No.	Part No.
1/2"	CGS-050	--	--	--
3/4"	CGS-075	CGNE-075	CGTB-075	CGVT-075
1"	CGS-100	CGNE-100	CGTB-100	CGVT-100
1 1/4"	CGS-125	CGNE-125	CGTB-125	CGVT-125
1 1/2"	CGS-150	CGNE-150	CGTB-150	CGVT-150
2"	CGS-200	CGNE-200	CGTB-200	CGVT-200
2 1/2"	CGS-250	CGNE-250	CGTB-250	CGVT-250
3"	CGS-300	CGNE-300	CGTB-300	CGVT-300
4"	CGS-400	CGNE-400	CGTB-400	CGVT-400
5"	CGS-500	--	--	--
6"	CGS-600	--	CGTB-600	--
8"	CGS-800	--	--	--

## Maximum Pressure Ratings P.S.I. for Camlock Couplings @ 70°F

Size Inches	Aluminum / Brass	Stainless	Polypropylene
1/2"	150	150	100
3/4"	250	250	100
1"	250	250	100
1 1/4"	250	250	100
1 1/2"	225	250	100
2"	200	250	100
2 1/2"	150	150	--
3"	125	150	75
4"	75	100	50
6"	75	75	--

\* CAM AND GROOVE COUPLINGS SHOULD NEVER BE USED FOR COMPRESSED AIR, GASES OR STEAM.